

www.u-tron.com



U-Tron (Beijing) Electronics Co. Ltd.

June 2010



U-Tron (Beijing) Electronics Co. Ltd.

Preface

U-Tron (Beijing) Electronics Co. Ltd., was established in 1992 as an WOFE in Beijing, China. 100% of the funding for the company was invested by an American Company,

Since 2008 we have moved into the research and development and manufacturing of High Power LED products for ITS and other applications.

In the early of 2008, we successfully developed the first series of LED street lighting products with their helping . , At present U-Tron has introduced more than 20 products and own 6 patents.

China is a big electronics manufacturing country, the domestic LED industry, has broad prospects for development. The next five years, China will also take solid-state lighting as a major project to promote; estimated that by 2010 the entire Chinese LED industry output will be more than 150 billion.

In addition, China is rich in non-ferrous metal resources, gallium, indium-rich, the world's total reservoir Amount of 70% -80%, making China's development of solid-state lighting industry, with resources advantages.

Welcome domestic and foreign investors, financing, shareholding, participation in management.



Features

- Maximum light output.
- High-efficiency heat transfer.
- Best to save energy.
- To ensure a large area illumination Coverage.
- Look elegant & Light weight.
- Using Cree XLamp High Power LED Chips.
- Uniformity brightness, luminous efficiency under any height.
- Cold light source; Non-thermal radiation; Non-hazardous metallic mercury; High-efficiency cooling features; Green Environmental.
- Light weight; low-powered; High luminous; No over heating.
- Long life; Good stability and reliability.
- Housing body made of metal, resisting force is good, surface oxidation treatment.
- Maintenance costs low, surfaces of tempered glass coated with dust is difficult.



Introduction R & D products

At present U-Tron has introduced 38 unique products.

- Lucas LED Street Lights
- BatLED Lights
- Venus outdoor billboard lights
- Solar LED Lights
- E40 Retrofit LED Bulb
- Helios E27 Light Bulbs
- MR16 Comets spots lights
- Down lights E40 and Hook mount
- Indoor large Bill board lights
- Smart Ad box



Lucas LED Street Lights

L / 30 Technical Specifications:

- LED Type: Cree Q5
- Number of LED: 30
- LED Total Flux: 3,210 lm
- Efficacy: 80.25 lm/w
- Total Power Consumption: 40 watts
- Power Rating: 220V 50Hz
- IP Rating: IP 65
- Net Weight: 8.71 Kg
- Available Color: Black, White, Gray, Green
- Light Dimensions: 560x333x100.50mm





Lucas LED Street Lights

LI 42 Technical Specifications:

- LED Type: Cree Q5
- Number of LED: 42
- LED Total Flux: 4,494 lm
- Efficacy: 81.71 lm/w
- Total Power Consumption: 55 watts
- Power Rating: 220V 50Hz
- IP Rating: IP 65
- Net Weight: 8.71 Kg
- Available Color: Black, White, Gray, Green
- Light Dimensions: 560x333x100.50mm



Lucas LED Street Lights

L II 60 Technical Specifications:

- LED Type: Cree Q5
- Number of LED: 60
- LED Total Flux: 6,420 lm
- Efficacy: 80.25 lm/w
- Total Power Consumption: 80 watts
- Power Rating: 220V 50Hz
- IP Rating: IP 65
- Net Weight: 11 Kg
- Available Color: Black, White, Gray, Green
- Light Dimensions: 689x333x100.50mm





Lucas LED Street Lights

L II 84 Technical Specifications:

- LED Type: Cree Q5
- Number of LED: 84
- LED Total Flux: 3,210 lm
- Efficacy: 81.71 lm/w
- Total Power Consumption: 110 watts
- Power Rating: 220V 50Hz
- IP Rating: IP 65
- Net Weight: 11 Kg
- Available Color: Black, White, Gray, Green
- Light Dimensions: 689x333x100.50mm





Lucas LED Street Lights

L III 90 LED Technical Specifications:

- LED Type: Cree Q5
- Number of LED: 90
- LED Total Flux: 9,630 lm
- Efficacy: 83.74 lm/w
- Total Power Consumption: 115 watts
- Power Rating: 220V 50Hz
- IP Rating: IP 65
- Net Weight: 15 Kg
- Available Color: Black, White, Gray, Green
- Light Dimensions: 686x333x198mm





Lucas LED Street Lights

- ***LIII 114 LED Technical Specifications:***
 - LED Type: Cree Q5
 - Number of LED: 114
 - LED Total Flux: 12,198 lm
 - Front cover: Frosted tempered Glass cover
 - Efficacy: 90.35 lm/w
 - Total Power Consumption: 135 watts
 - Power Rating: 220V 50Hz
 - IP Rating: IP 65
 - Net Weight: 15 Kg
 - Available Color: Black, White, Gray, Green
 - Light Dimensions: 686x333x198mm



Lucas FP Street Lights

- ***LFP 60 Technical Specifications:***
- LED Type: Cree Q5
- Number of LED: 60
- LED Total Flux: 6,420 lm
- Efficacy: 80.25 lm/w
- Total Power Consumption: 80 watts
- Power Rating: 220V 50Hz
- IP Rating: IP 65
- Net Weight: 11 Kg
- Available Color: Black, White, Gray, Green
- Light Dimensions: 689x333x100.50mm





Lucas FP Street Lights

- ***LFP 72 Technical Specifications:***

- LED Type: Cree Q5
- Number of LED: 72
- LED Total Flux: 7,700 lm
- Efficacy: 85.6 lm/w
- Total Power Consumption: 90 watts
- Power Rating: 220V 50Hz
- IP Rating: IP 65
- Net Weight: 11 Kg
- Available Color: Black, White, Gray, Green
- Light Dimensions: 689x333x100.50mm





Lucas FP Street Lights

- ***LFP 84 Technical Specifications:***

- LED Type: Cree Q5
- Number of LED: 84
- LED Total Flux: 8,988 lm
- Efficacy: 81.71 lm/w
- Total Power Consumption: 110 watts
- Power Rating: 220V 50Hz
- IP Rating: IP 65
- Net Weight: 11 Kg
- Available Color: Black, White, Gray, Green
- Light Dimensions: 689x333x100.50mm





Lucas FP 126 Street Lights

LFP 126 Technical Specifications:

- LED Type: Cree Q5
- Number of LED: 126
- LED Total Flux: 13,482 lm
- Front cover: Frosted tempered Glass cover
- Efficacy: 92.97 lm/w
- Total Power Consumption: 145 watts
- Power Rating: 220V 50Hz
- IP Rating: IP 65
- Net Weight: 11 Kg
- Available Color: Black, White, Gray, Green
- Light Dimensions: 689x333x100.50mm





BatLEDs Lights

BI 30 Technical Specifications:

- LED Type: Cree Q5
- Number of LED: 30
- LED Total Flux: 3,210 lm
- Efficacy: 80.25 lm/w
- Total Power Consumption: 40 watts
- Power Rating: 220V 50Hz
- IP Rating: IP 65
- Net Weight: 7.39 Kg
- Available Color: Black, White, Gray, Green
- Light Dimensions: 284x333x200.50mm



BatLEDs Lights

BI 42 Technical Specifications:

- LED Type: Cree Q5
- Number of LED: 42
- LED Total Flux: 4,494 lm
- Efficacy: 81.71 lm/w
- Total Power Consumption: 55 watts
- Power Rating: 220V 50Hz
- IP Rating: IP 65
- Net Weight: 7.39 Kg
- Available Color: Black, White, Gray, Green
- Light Dimensions: 284x333x200.50mm



BatLEDs Lights

BII 60 Technical Specifications:

- LED Type: Cree Q5
- Number of LED: 60
- LED Total Flux: 6,420 lm
- Efficacy: 80.25 lm/w
- Total Power Consumption: 80 watts
- Power Rating: 220V 50Hz
- IP Rating: IP 65
- Net Weight: 9.93 Kg (exclude mounts)
- Available Color: Black, White, Gray, Green
- Light Dimensions: 402x333x200.50mm



BatLEDs Lights

BII 84 Technical Specifications:

- LED Type: Cree Q5
- Number of LED: 84
- LED Total Flux: 8,898 lm
- Efficacy: 81.71 lm/w
- Total Power Consumption: 110 watts
- Power Rating: 220V 50Hz
- IP Rating: IP 65
- Net Weight: 9.93 Kg (exclude mounts)
- Available Color: Black, White, Gray, Green
- Light Dimensions: 402x333x200.50mm



Venus 10 Lights

Venus 10 Technical Specifications:

- LED Type: Cree Q5
- Number of LED: 10
- LED Total Flux: 1,070 lm
- Efficacy: 71.33 lm/w
- Total Power Consumption: 15 watts
- Power Rating: 220V 50Hz
- IP Rating: IP 65
- Net Weight: 3.75 Kg
- Available Color: Gray
- Light Dimensions: 312x235x195mm





Venus 14 Lights

Venus 14 Technical Specifications:

- LED Type: Cree Q5
- Number of LED: 14
- LED Total Flux: 1,498 lm
- Efficacy: 74.9 lm/w
- Total Power Consumption: 20 watts
- Power Rating: 220V 50Hz
- IP Rating: IP 65
- Net Weight: 3.75 Kg
- Available Color: Gray
- Light Dimensions: 312x235x195mm



Venus 30 Lights

Venus 30 Technical Specifications:

- LED Type: Cree Q5
- Number of LED: 30
- LED Total Flux: 3,210 lm
- Front cover: Frosted tempered Glass cover
- Efficacy: 80.25 lm/w
- Total Power Consumption: 40 watts
- Power Rating: 220V 50Hz
- IP Rating: IP 65
- Net Weight: 3.75 Kg
- Available Color: Gray
- Light Dimensions: 312x235x195mm



Venus 42 Lights

Venus 42 Technical Specifications:

- LED Type: Cree Q5
- Number of LED: 42
- Front cover: Frosted tempered Glass cover
- LED Total Flux: 4,494 lm
- Efficacy: 89.88 lm/w
- Total Power Consumption: 50 watts
- Power Rating: 220V 50Hz
- IP Rating: IP 65
- Net Weight: 3.75 Kg
- Available Color: Gray
- Light Dimensions: 312x235x195mm



Solar LED Lights

SI 30 Technical Specifications:

- LED Type: Cree Q5
- Number of LED: 30
- LED Total Flux: 3,210 lm
- Efficacy: 91.71 lm/w
- LED Consumption: 35 watts
- Input Voltage: DC 10-30V
- IP Rating: IP 65
- Net Weight: 6.49 Kg
- Available Color: Black, White, Gray, Green
- Light Dimensions: 443x333x100.50mm





Solar LED Lights

SI 42 Technical Specifications:

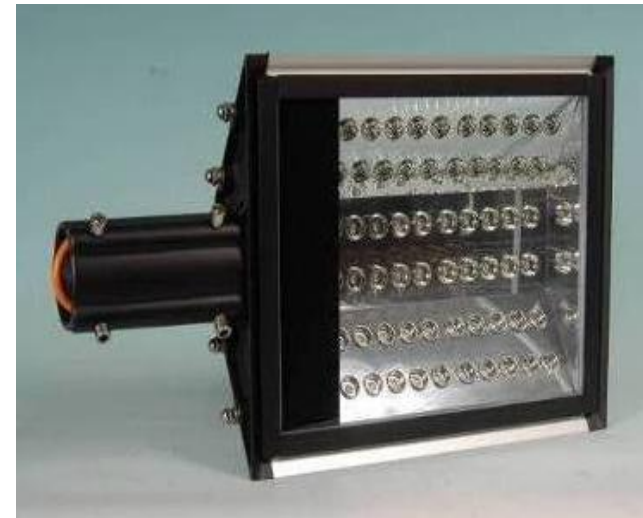
- LED Type: Cree Q5
- Number of LED: 42
- LED Total Flux: 4,494 lm
- Efficacy: 89.88 lm/w
- LED Consumption: 50 watts
- Input Voltage: DC 10-30V
- IP Rating: IP 65
- Net Weight: 6.49 Kg
- Available Color: Black, White, Gray, Green
- Light Dimensions: 443x333x100.50mm



Solar LED Lights

SII 60 Technical Specifications:

- LED Type: Cree Q5
- Number of LED: 60
- LED Total Flux: 6,420 lm
- Efficacy: 91.71 lm/w
- LED Consumption: 70 watts
- Input Voltage: DC 10-30V
- IP Rating: IP 65
- Net Weight: 8.71 Kg
- Available Color: Black, White, Gray, Green
- Light Dimensions: 560x333x100.50mm



Solar LED Lights

SII 84 Technical Specifications

- LED Type: Cree Q5
- Number of LED: 84
- LED Total Flux: 8,988 lm
- Efficacy: 89.88 lm/w
- LED Consumption: 100 watts
- Input Voltage: DC 10-30V
- IP Rating: IP 65
- Net Weight: 8.71 Kg
- Available Color: Black, White, Gray, Green
- Light Dimensions: 560x333x100.50mm





E40 Retrofit LED Bulb LED

•*Lucas E40 Technical Specifications:*

- E40 type socket
- Number of LED is only 10
- Maximum power consumption: 15 Watts - includes LEDs, Drivers and Power Supply.
- (DC version available upon request)
- Maximum light output: >1000 Lux
- Cool White (5000~7000K) or
- Warm White (3000- 4000K)
- Coverage: 90° cone shape. Perfectly distributed light beam
- Life cycle: 50,000 hours
- Operating Temperature-30° C ~ 40° C
- Input Power 85 - 265VAC (universal)
- Lamp housing material: Aluminum Alloy, PC
- Recommended Heights: 4, 5 or 6Meters
- Measured Illumination (E) (Height=4.5m) ->13 lux
- Effective Illuminated Area Height is equal to the radius of the coverage area
- IP Rating is: IP 58
- Approvals: comply with all RoHS requirements. CE and UL pending





E40 Retrofit LED Bulb LED

•*Characteristics of our E40*

- We use CREE® LED chips for highest light output and reliability.
- Very low total power consumption: Only 15 Watts!
- High Lumen output: >1000 Lumens.
- Internal current is only 330mA.
- Evenly distributed Circular Light Beam. Using our patented reflector cups we have achieved the most economical way to control light.
- Fits All Standard E40 Sockets, A Direct Retrofit Replacement:
- Easy assembly and Disassembly mechanism.
- Changing Power Supply made easy, you don't need complicated tools to open the case and swapping a new power supply. .
- Smart Heat sink holds it all together using 2 long screws and maintain highly efficient thermal management
- Less visual fatigue when used with glossy shade.
- No need for "Very Hot" warnings
- No more cleaning.
- Global Power input: Use it in any country. 80VAC to 260VAC.
- Line frequency: 45Hz to 65 Hz
- No Ultraviolet (UV) or Infrared (IR) Radiation
- Shock-resistant: No moving parts or delicate filaments or breakable glass. High precision Driver Board made of National Semiconductors LS3406 Chips to provide constant current and extend the life time of the LEDS.
- RoHS approved and certifies to be no poisonous substance, no Pb no Hg.
- Energy saved over 6 months will pay for lamp it self.
- Long lasting: guaranteed to provide over 70% of its original luminance for 50,000 hrs.





LED Helios E27 Light Bulb For Home and Office

Model Name:	Helios Cool White
Product Number:	6850-P03-CR4
Number of LED (*):	3
LED Type(*):	Cree XPG R4
Power Consumption:	3.8 watts
Efficiency (lm/w) :	105
CFL Replacement:	20 watts
Incandescent Replacement:	60 watts
Available Socket:	E27, B22, GU10
Total Flux (Clear Cover)	390 lm
Light Dimensions	(D) 56.00mm x (H) 106.00mm
Warranty	3 Years
Net Weight	135 grams





LED Helios E27 Light Bulb For Home and Office

Model Name:	Helios Warm White
Product Number:	6850-P03-WQ5
Number of LED (*):	3
LED Type(*):	Cree XPG Q5
Power Consumption:	3.8 watts
Efficiency (lm/w) :	86
CFL Replacement:	13 watts
Incandescent Replacement:	40 watts
Available Socket:	E27, B22, GU10
Total Flux (Clear Cover)	321 lm
Light Dimensions	(D) 56.00mm x (H) 106.00mm
Warranty	3 Years
Net Weight	135 grams





LED Helios Dimmable Light Bulb For Home and Office

Model Name:	Helios Cool White
Product Number:	6850-P03-CR4
Number of LED (*):	3
LED Type(*):	Cree XPG R4
Power Consumption:	3.8 watts
Efficiency (lm/w) :	105
CFL Replacement:	20 watts
Incandescent Replacement:	60 watts
Available Socket:	E27, B22, GU10
Total Flux (Clear Cover)	390 lm
Light Dimensions	(D) 56.00mm x (H) 106.00mm
Warranty	3 Years
Net Weight	135 grams





LED Helios Dimmable Light Bulb For Home and Office

Model Name:	Helios Warm White
Product Number:	6850-P03-CQ5
Number of LED (*):	3
LED Type(*):	Cree XPG Q5
Power Consumption:	3.8 watts
Efficiency (lm/w) :	105
CFL Replacement:	13 watts
Incandescent Replacement:	40 watts
Available Socket:	E27, B22, GU10
Total Flux (Clear Cover)	321 lm
Light Dimensions	(D) 56.00mm x (H) 106.00mm
Warranty	3 Years
Net Weight	135 grams





LED Comets Spotlight

Socket: MR16
Input Voltage: 12V
Power Consumption: 3W
LED Type: CREE 3 x 1W LED
Color: Cool White
Lumens: 320 lm
Light Body Temperature: <60° C
Lens Angle: 30° , 60°
Mercury-Free,
No non-electromagnetic radiation,
No ultraviolet and infrared radiation





LED Comets Spotlight

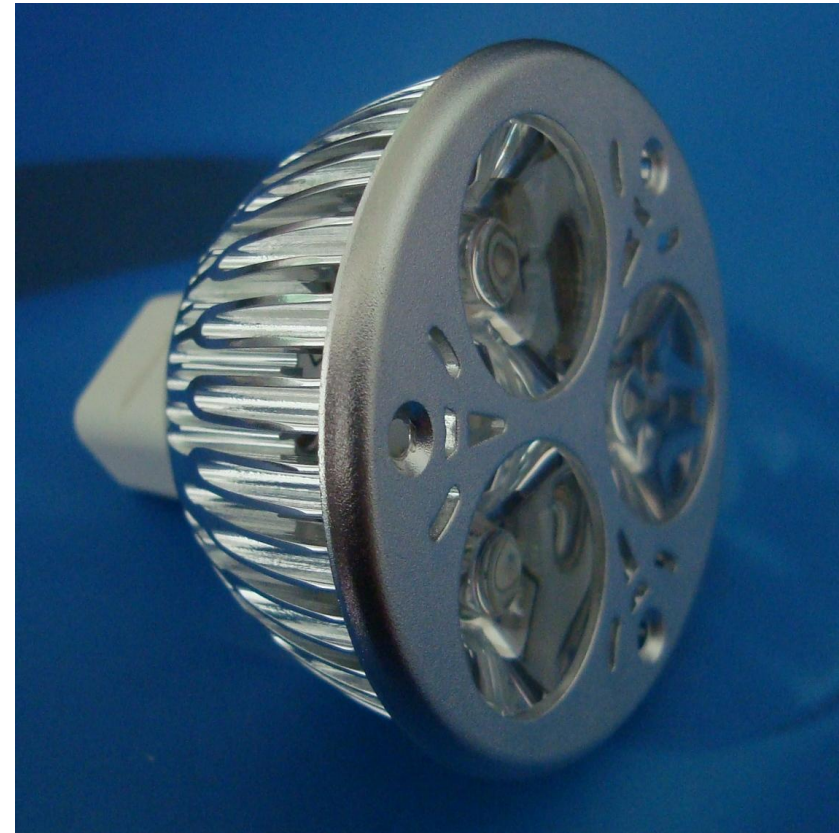
Socket: MR16
Input Voltage: 12V
Power Consumption: 3W
LED Type: CREE 3 x 1W LED
Color: Warm White
Lumens: 210 lm
Light Body Temperature: <60° C
Lens Angle: 30° , 60°
Mercury-Free,
No non-electromagnetic radiation,
No ultraviolet and infrared radiation





LED Comets Spotlight

Socket: MR16
Input Voltage: 12V
Power Consumption: 3W
LED Type: CREE 3 x 1W LED
Color: Cool White
Lumens: 320 lm
Light Body Temperature: <60° C
Lens Angle: 30° , 60°
Mercury-Free,
No non-electromagnetic radiation,
No ultraviolet and infrared radiation





LED Comets Spotlight

Socket: MR16
Input Voltage: 12V
Power Consumption: 3W
LED Type: CREE 3 x 1W LED
Color: Warm White
Lumens: 210 lm
Light Body Temperature: <60° C
Lens Angle: 30° , 60°
Mercury-Free,
No non-electromagnetic radiation,
No ultraviolet and infrared radiation





UFO LED Lights

UFO E40 LED Outdoor Lights

- Number of LED: 1
- LED Type: Taiwan LED (CL-L233-MC13L1)
- LED Consumption: 11 W
- Total Power Consumption: 12 W
- Power Rating: 220V 50 Hz
- Rated Temperature: 98%
- Maximum Operating Temperature: 55° C
- LED Total Flux : 750 lm
- IP Rating: IP55
- Light Dimensions : (H)158mm x (D)120mm





UFO LED Lights

UFO E40 LED Indoor Lights

- Number of LED: 1
- LED Type: Taiwan LED (CL-L233-MC13L1)
- LED Consumption: 11 W
- Total Power Consumption: 12 W
- Power Rating: 220V 50 Hz
- Rated Temperature: 98%
- Maximum Temperature: 55° C
- LED Total Flux :750 lm
- IP Rating: IP55
- Light Dimensions : (H)158mm x (D)120mm



UFO Hanging LED LIGHT

UFO Hanging Light

- Number of LED: 6
- LED Type: CREE LED
- LED Consumption: 7 W
- Total Power Consumption: 10 W
- Power Rating: 220V 60Hz
- Rated Temperature: 98%
- Maximum Operating Temperature: 55° C
- LED Total Flux: 800 lm
- IP Rating: IP55
- Light Dimension: (H)158mm x (D)120mm



UFO Hanging LED LIGHT

UFO Hanging Light

- Number of LED: 12
- LED Type: CREE LED
- LED Consumption: 13.8 W
- Total Power Consumption: 16 W
- Power Rating: 220V 60 Hz
- Rated Temperature: 98%
- Maximum Operating Temperature: 55° C
- LED Total Flux: 800 lm
- IP Rating: IP55
- Light Dimension: (H)158mm x (D)120mm





LED Bill Board Light Bars

Technical Parameters:	6 per box
Number of LED	30
LED Type	Cree Q5
Power Consumption	30 Watts
Power Rating	220V 50Hz
Operating Temperature	-40 °C to 45 °C
LED Total Flux	3,210 lm
IP Rating	IP 58
Light Bar Dimension:	600x90x35mm
Warranty	36 months
Guarantee on LED < 50% loss(Whichever come first)	60 months
Efficacy	50,000 Hrs
	80lm



Light Effects of LED Light bars



Smart Ad Signage

SAS 60 Technical Specifications:

- LED Type: Cree Q5
- Number of LED: 60
- Total Power Consumption: 80 watts
- Power Rating: 220V 50Hz
- Temperature rating: -40 °C to 45 °C
- LED Total Flux: 6,420 lm
- IP Rating: IP 65
- Lights Dimensions: 800x1300x92mm
- Efficacy: 80.25 lm/w





Successful Projects

Project Name: Gothenburg, Sweden 2008

- **Address: Jacobson between 12th and 13th Street**
- **Number of Installation: 24 lights**
- **Products Types: 20 Lucas II 84 and 4 Lucas I 42**
- **Height of Poles : 12 Meter**
- **The distance between the poles: 25 Meters**
- **Installation Date: December 2008**
- **Contact: Lasso Stevenson**





Successful Projects

Project Name

Tianjin People's Stadium Solar Lights

- Address: Tianjin People's Stadium
- Number of Installation: 5 lights
- Products Type: E40 Retrofit LED Bulb
- Height of Poles: 3.5 Meter
- Installation Date : July 2009
- Contact: Mr. Ni





Successful Projects

- **Location: Santiago Chile**
- LED Model: Lucas II 84
- Date: September 2008





Successful Projects

BatLEDs Light in Nanjing Subway

In March 2009, representatives from the China Railway Construction Group No. 3 Company and U-Tron Beijing met to oversee the initial installation of U-Tron BatLED lights on Nanjing's Subway Line 2.

A team from U-Tron is installing BatLED 40W lamps in 13 kilometers of the subway tunnel. The BatLEDs are replacing conventional 120W fluorescent lamps and are spaced at 10 meter intervals along the tunnel.

Mr. Yang, the vice director of the China Railway Construction Group No. 3 Company and Mr. Chen, the project manager met with U-Tron managing director, Raja Magasweran, and his team, project manager Mr. Li, contractor Mr. He, and U-Tron's Nanjing representatives, Ms. Lin and Mr. Peng.

Technical staff from No.3 company had previously evaluated U-Tron BatLED lamps and recommended that they be installed in place of conventional fluorescent lamps because the BatLEDs gave better coverage than traditional lamps as well as offering the advantages of lower power consumption and reduced maintenance costs.





Successful Projects

Project Name :

**Family Compound of Tianjin
Lighting Bureau Light Sample**

- **Address: Family Compound of
Tianjin Lighting Bureau**
- **Number of Installation: 1 light**
- **Type of light: Lucas II 84**
- **Height of Pole: 12 Meters**
- **Installation Date : February, 2009**
- **Contact: Mr. Jian, Chen Chen**





Successful Projects

Project Name : Installation for Daxing Development Zone

- **Address : Beijing Daxing
Development Zone**
- **Number of Installation : 53 lights**
- **Type of light : Lucas I 30**
- **Height of Poles : 12 Meters**
- **Installation Date : August 2009**
- **Contact : David Wen, Mr Wang**





Successful projects

Project Name:
Daxing District Tin Fu
Street Lighting Reconstruction

- Address : Tin Fu Street,
Daxing District,
Beijing
- Number of Installed Lights: 420 pcs
- Type of Lights: Lucas III 90
- Height of Pole: 12 meters
- Date of Installation: December 2009





Successful projects

Project Name:

BDA, Beijing Road East
Drainage Project

- Address : BDA, Beijing Road East
Drainage Project
Beijing, China

- Type of Lights: Lucas III 90
- Date of Installation: October 2009





Successful projects

Project Name:
Pilot Nanshan
District, Shenzhen

- Address: Nanshan District,
Shenzhen
Guandong, China
- Type of Lights: Lucas II 84
- Date of Installation: January 2010



Successful projects

Project Name:

Yizhuang Guiyuan
Nanli Community

- Address: Beijing Yizhuang Guiyuan
Nanli Community
Beijing China
- Type of Lights: Lucas I 42
- Date of Installation: August 2009





Successful projects

Project Name:

Yizhuang Government Bldg.
LED Testing

•Address:

BDA Yizhuang Government Bldg.
Beijing China

•Type of Lights: LED Helios

•Date of Installation: May 2010





Successful projects

Project Name:

Yuxi Hongta Group
Headquartes

•Address:

Yuxi Hongta Group
Headquartes
Yunnan China

•Type of Lights: Lucas I 42

•Date of Installation: November 2009



Successful projects

Project Name:

Yuxi Sanhu Road Project

•Address:

Yuxi Sanhu Road
Yunnan China

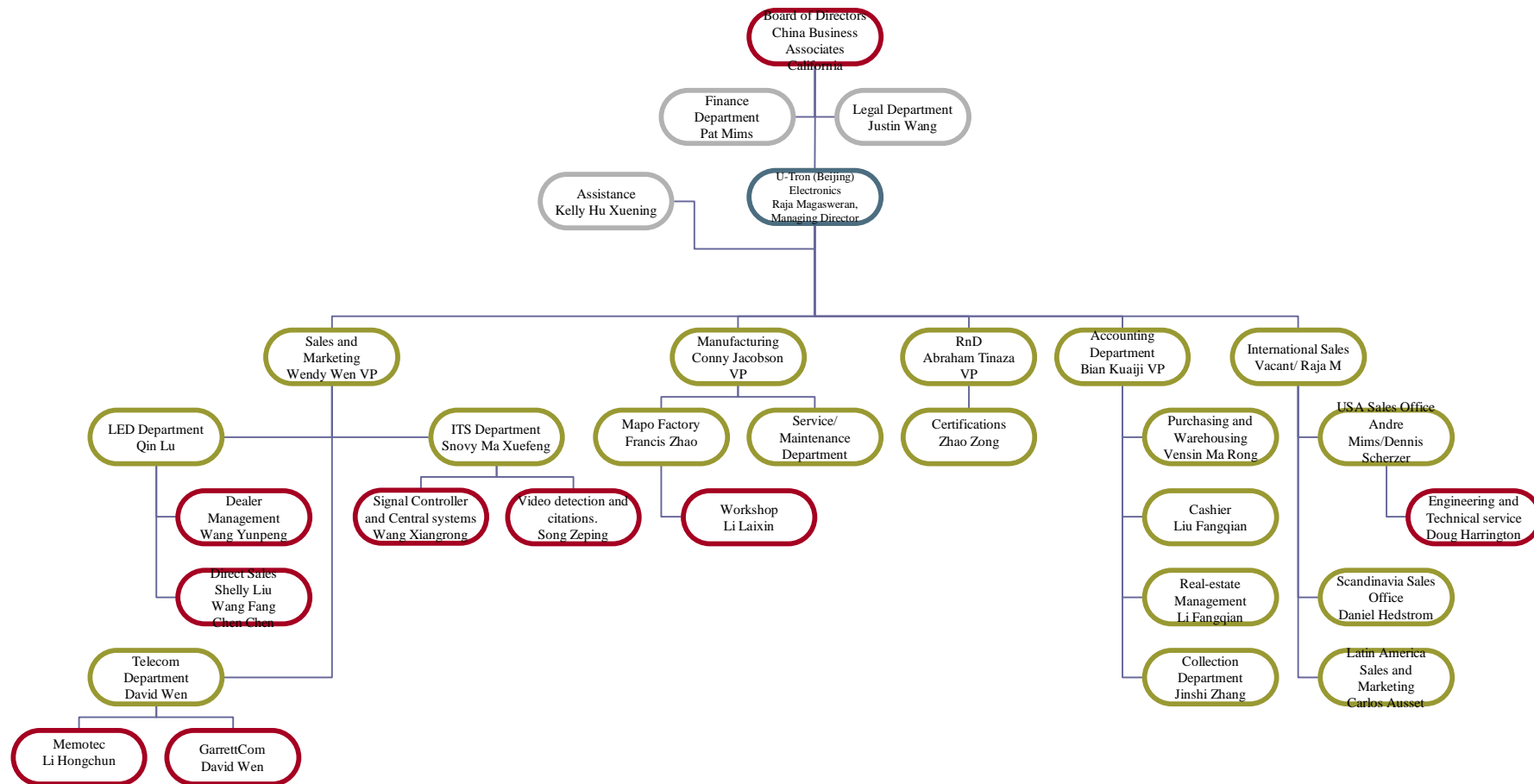
•Type of Lights: Lucas II 84

•Date of Installation: September 2009



U-Tron (Beijing) Electronics Co. Ltd.

Organization Chart





U-Tron (Beijing) Electronics Co. Ltd. Company Information

Company Name : U-Tron (Beijing) Electronics Co. Ltd.
Company Address 10 Langjiayuan, Beijing, China 100022
Established: July 16, 1992
Approval of Unit : Beijing Administration For Industry and
Commerce
Type of Company: Wholly Foreign-owned



U-Tron (Beijing) Electronics Co. Ltd. Qualification

企业法人营业执照
(副本)
注册号: 110000410022480

名称: 优创(北京)电子有限公司
住所: 北京市朝阳区建外郎家园10号
法定代表人: 拉贾·马格斯维德
注册资本: 美元50万元
实收资本: 美元50万元
公司类型: 有限责任公司(外国法人独资)
经营范围: 生产计算机通讯功能卡、配套部件及相关售后服务; 销售自产产品。

股东(发起人): 美国中质科技发展有限公司

营业期限: 自1992年07月16日至2017年07月15日
成立日期: 1992年07月16日

登记机关: 北京市工商行政管理局

中华人民共和国外商投资企业批准证书
CERTIFICATE OF APPROVAL
FOR ESTABLISHMENT OF ENTERPRISES WITH FOREIGN INVESTMENT IN THE PEOPLE'S REPUBLIC OF CHINA

批准文号: 1100000022480

企业名称: 优创(北京)电子有限公司
企业性质: 外商投资企业
经营范围: 生产计算机通讯功能卡、配套部件及相关售后服务; 销售自产产品。

批准日期: 2006年11月17日

税务登记证
(副本)
税证号码: 1100000022480

纳税人名称: 优创(北京)电子有限公司
法定代表人: 拉贾·马格斯维德
地址: 北京市朝阳区建外郎家园10号
登记注册类型: 外商(独资)企业
经营范围: 生产计算机通讯功能卡、配套部件及相关售后服务; 销售自产产品
主管税务机关: 北京市工商行政管理局

税务机关: 北京市地方税务局

中华人民共和国组织机构代码证
(副本)
代码: 60002130-7

机构名称: 优创(北京)电子有限公司
机构类型: 法人企业
地址: 北京市朝阳区建外郎家园10号
有效期: 2006年11月17日至2010年11月15日
颁发单位: 北京市质量技术监督局
登记号: 组管代 110000-11220-1

中华人民共和国国家质量监督检验检疫总局
组织机构代码证

代码: 60002130-7

机构名称: 优创(北京)电子有限公司
机构类型: 法人企业
地址: 北京市朝阳区建外郎家园10号
有效期: 2006年11月17日至2010年11月15日
颁发单位: 北京市质量技术监督局
登记号: 组管代 110000-11220-1

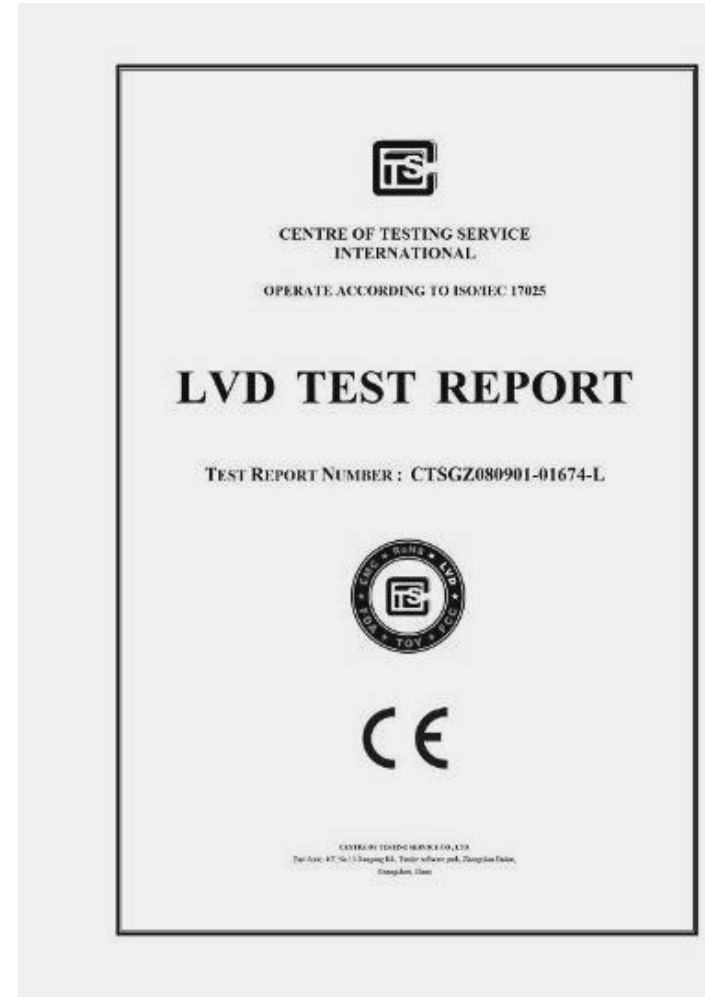


U-Tron (Beijing) Electronics Co. Ltd. Patent





U-Tron (Beijing) Electronics Co. Ltd. Certification





U-Tron (Beijing) Electronics Co. Ltd.

Chronicle of Events

- **1992** The U-Tron (Beijing) Electronics Co., Ltd is established as a wholly owned enterprise of China Business Associates.
- **1992** The U -Tron researched and developed successfully PCBX (Personal Computer Branch Exchange) personal computer telephone switching system and it becomes the first product that combines computer and telecommunication and to be manufactured and marketed for commercial applications.
- **1993** China Telecom issues U-Tron PCBX a license to be permitted into the China Telecom Network.
- **1993** U-Tron becomes first in the world to manufacture a complete set of the PCDY system, which allows meetings and conversations to take place over the telephone, commonly known as "phone meetings." Made of the most advanced technology at the time, the system allows up to 60 individuals to join the "phone meeting." Aside from being able to conduct meetings over the phone, this system can store up to 256 messages.
- **1994** The first generation of U-Tron PCHY is manufactured. From factories to mines, this advanced technology system can be utilized in various work environments and provides various functions, such as monitoring and assigning work.
- **1995** U-Tron pioneers into importing the first generation of LCD over-head projectors in China. The American company Proxima also awards U-Tron a certificate for selling one million overhead projectors to the Chinese market.
- **1996** U-Tron imports the first generation of digital projectors to China. Ever since U-Tron's introduction of the digital projector to the Chinese market, there has been great demand from Chinese consumers for this product.



U-Tron (Beijing) Electronics Co. Ltd.

Chronicle of Events

- **1997 U-Tron is the first company in China to produce and manufacture the hands-free headset, which has both an earpiece and a microphone in one device.**
- **1997 U-Tron becomes an exclusive authorized dealer to supply the reconstruction system and maintenance services on the LANETCO two-chip SVGA DLP rear projection system for the Command and Control Center of the Beijing Traffic Bureau.**
- **1998 U-Tron assists the Agricultural Bank of Zi Bo in Shan Dong Province with connecting to the Internet network system.**
- **1999 U-Tron expands into the field of CTI, a telephone multi-function system. U-Tron successfully implements the Call Center system. Examples which illustrate the Call Center system's effectiveness can be found at Han Dan in Hei Bei Province at Cheng Jian Company's Customer Service Center and at Beijing's Qing Hua Tong Fang Computer Service Center.**
- **1999 U-Tron creates its own Chinese language-based web page.**
- **2000 U-Tron completes the development of the Beijing Police System software of 110/119/122. This system is successfully implemented in Shangdong, WeiFang, Heilongjiang Province Auto, and Shanxi Province JinCheng Police. As a result, the quality of the Emergency Response System drastically improves.**



U-Tron (Beijing) Electronics Co. Ltd.

Chronicle of Events

- **2001** The U-Tron Fax Server System is introduced to the Chinese market. At the same time, the China CTI.com website is also developed.
- **2001** The development of the U-Tron CALOG1000 conversation recording server with multiple communication capability is finished. Customers include Shijiazhuang Police Command Center, Tianjin Telecommunications Bureau, and the Beijing Underground Railway Construction Company.
- **2001** The British Colombia Urban Transportation Control Research Institute signs an agreement to develop an ITS program for Beijing and Shanghai. A series of U-Tron ITS products and applications are introduced.
- **2003** U-Tron wins the first ITS purchase contract for supplying Beijing with 800 MHz microwave receivers and transmitters for the city's Police and Traffic Bureau.
- **2003** U-Tron jointly develops the China National Fuzzy Data Research Center, the first electronic police surveillance system: "U-Tron 6000."
- **2003** The police photo citation and surveillance system "U-Tron 6000" are installed in the cities of Han Dan, Dezhou, and Tianjin.
- **2004** U-Tron re-developed sets of Traffic Lights using LEDs to meet the Chinese new standards, and won the approval from Wuxi Institute of Traffic Engineering.
- **2006** U-Tron re-developed Cree high-power LED street lamp series. The first patent application.
- **2008** U-Tron re-developed more than 10 series LED street lamp, they are including Lucas Street Light, Batleds lights, Solarled Lights. Our successful Project in Sweden are our Lucas Street lights.

www.u-tron.com



Contact Us

- **Address: 10 Langjiayuan, East 5th Floor, Beijing, China 100022**
- **Contact : Wendy Wen**
- **Toll Free Number: 400-626-1806**
- **FAX: 86-10-6568-2995**